

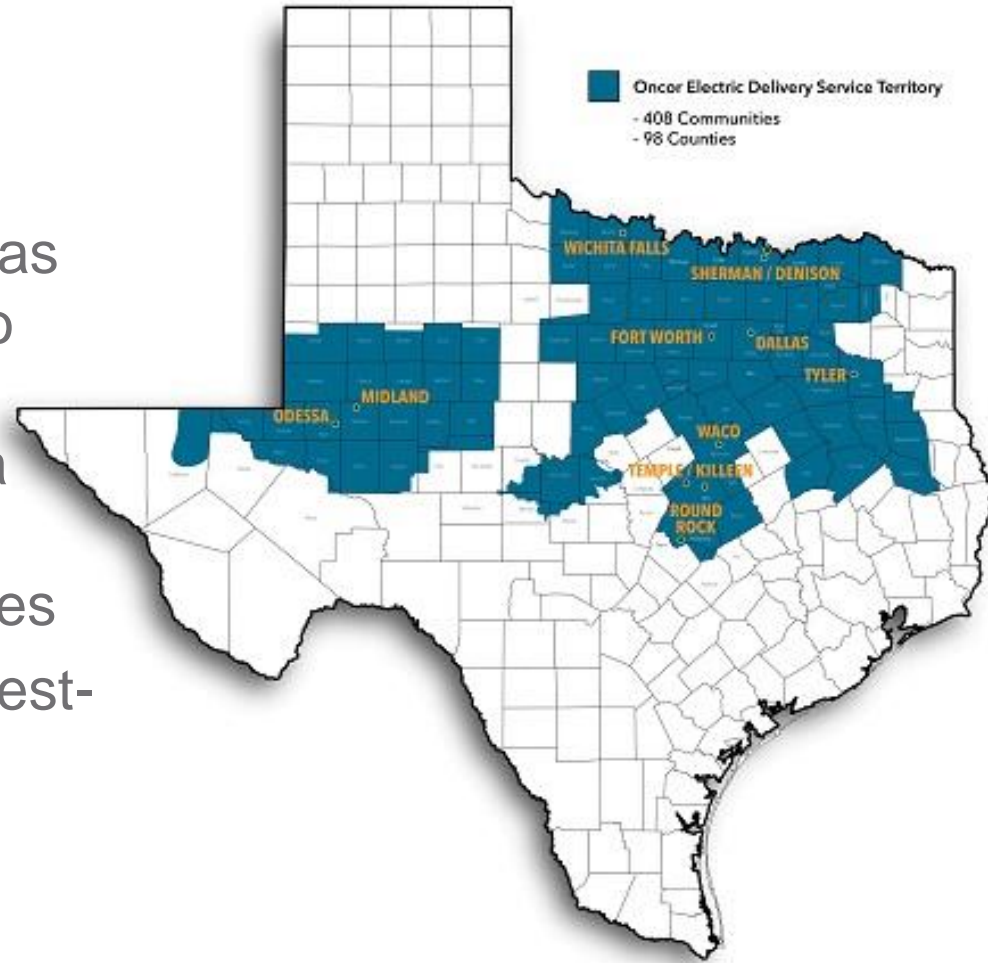
Oncor and Energy Efficiency: The Basics

WELCOME



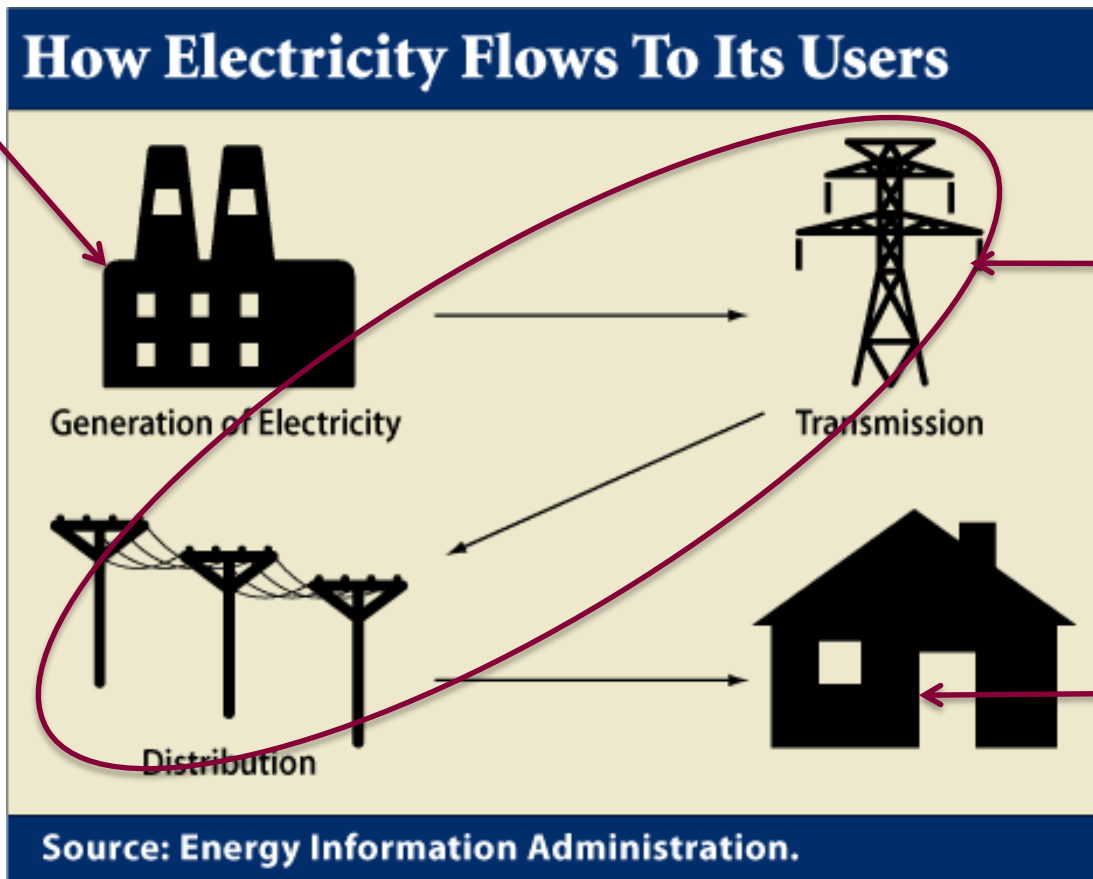
WHO IS ONCOR?

- Oncor (together with its subsidiaries) operates the largest distribution and transmission system in Texas
- Oncor supplies electricity to approximately 3.6 million homes and businesses in a service area of over 408 communities and 98 counties
- Operates in the U.S.'s highest-growth region in electric demand, according to the North American Electric Reliability Council (NERC)



DEREGULATION IN TEXAS & ONCOR

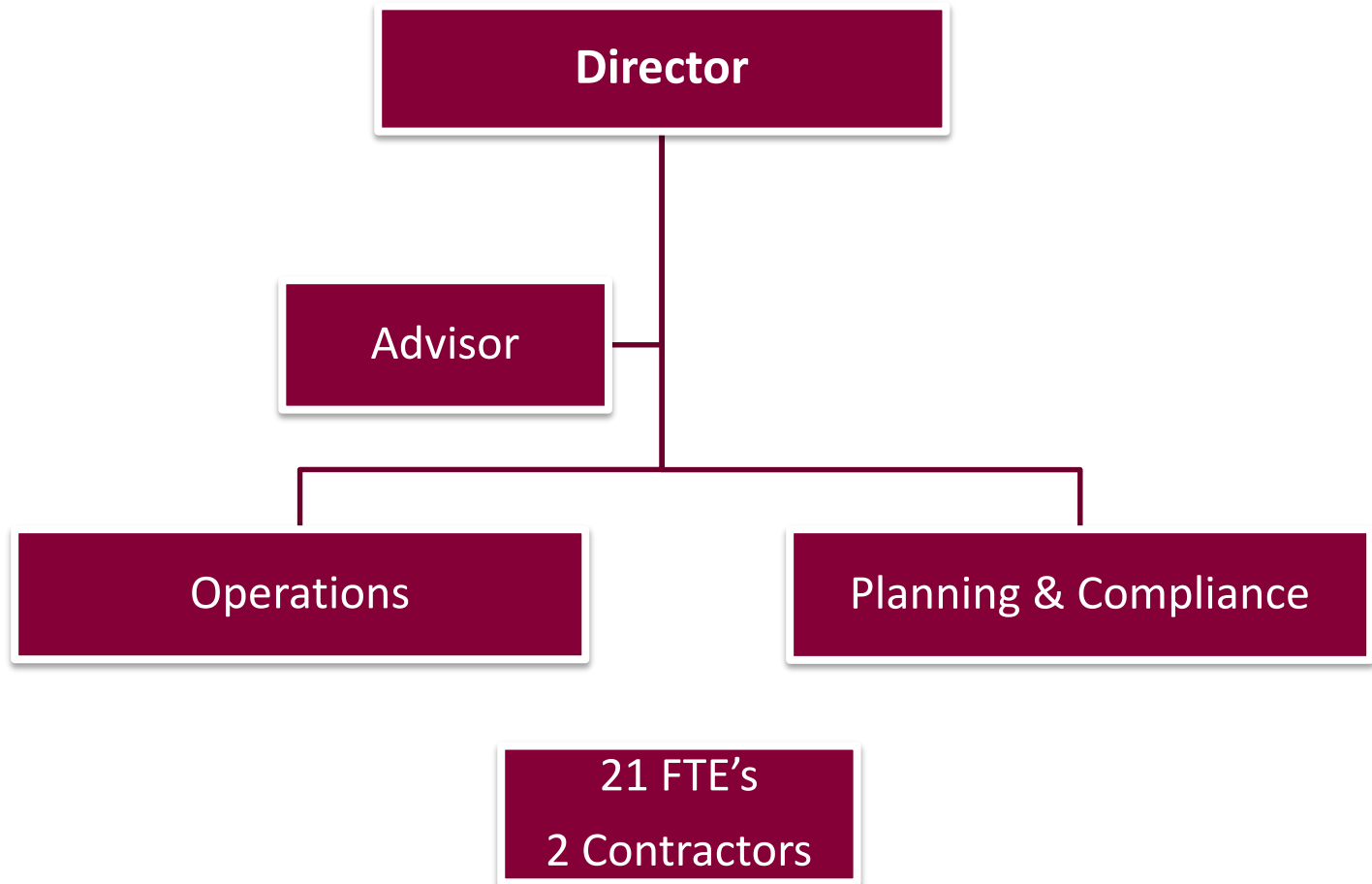
Generators



Oncor

Retail
Electric
Providers

ENERGY EFFICIENCY ORGANIZATION



WHAT IS ENERGY EFFICIENCY?

Energy Conservation

- Energy conservation is any behavior that results in the use of less energy.

Example: Turning lights off to save energy.



Energy Efficiency

- Energy efficiency is using technology that requires less energy to perform the same function.

Example: Installing efficient lighting, such as LEDs, to save energy.

WHY ENERGY EFFICIENCY?

- Energy efficiency is deemed to be the most cost effective “source” of energy.
- The cost of saving a kW or kWh is less than the cost of producing a kW or kWh (“cost effectiveness”)
- In past years, the electricity generation capacity during peak times has not always met the demand.
- Energy efficiency programs help create demand and supply of new technologies to encourage “early” adoption.
- Energy efficiency programs spur changes in new building codes as technologies become more readily available and affordable.

DEMAND AND ENERGY SAVINGS...WHERE DO THEY COME FROM?

To achieve the energy and demand goals, Oncor offers Energy Efficiency Programs.

- Choose the program that fits your needs
- Pick a service provider (takealloadoftexas.com)
- Service provider installs approved equipment
- Oncor calculates the savings & verifies the work
- Service provider receives an incentive!



**The more you save,
the more you earn!**

HOW DOES ONCOR PAY FOR ENERGY EFFICIENCY PROGRAMS?

Programs are paid for using rate payer funds collected by an Energy Efficiency Cost Recovery Factor (EECRF).

- Amounts for each rate class vary
- What is spent in a rate class is collected from the rate class

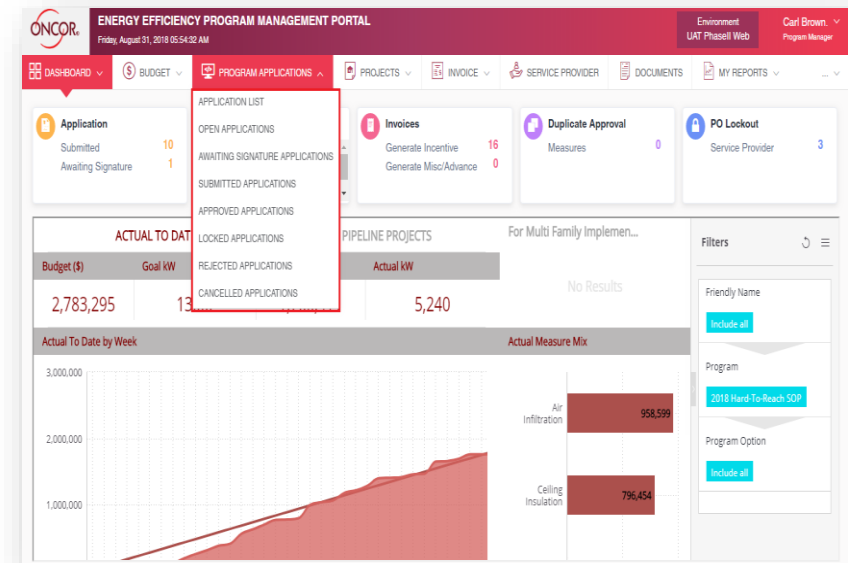


SERVICE PROVIDER & PARTICIPATION

ENERGY EFFICIENCY PROJECT MANAGEMENT PORTAL (EETPM)

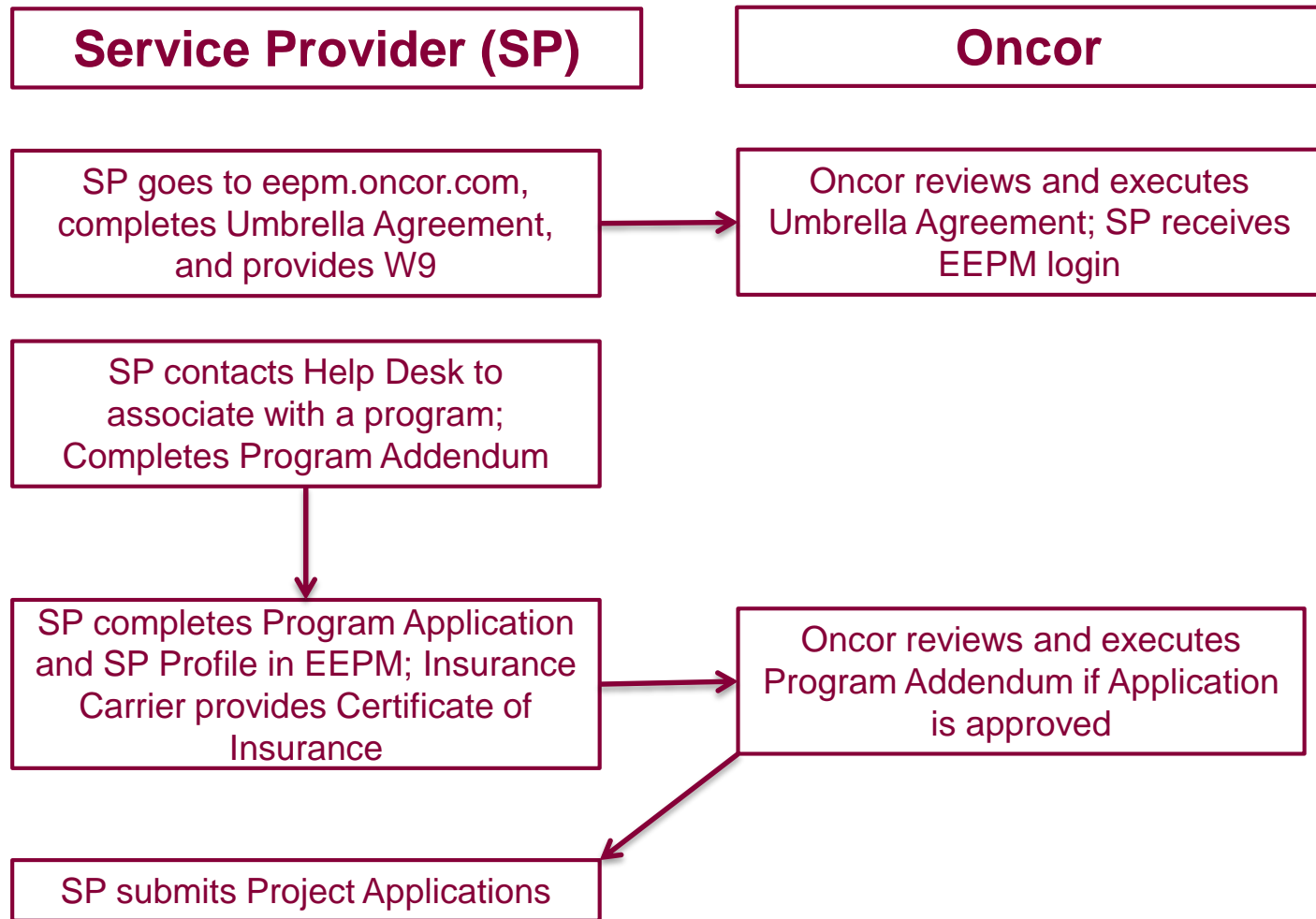
EETPM is Oncor's Web-based project management system. It allows users to:

- Manage their profile with Oncor
- Submit projects for incentives
- Check the status of projects
- Calculate incentives and savings
- Find additional resources such as program manuals, savings calculations (deemed savings) and other program materials



Visit eetpm.oncor.com and complete an Umbrella Agreement.

HOW TO ENROLL AS A SERVICE PROVIDER



Visit eepm.oncor.com for more information.

CUSTOMER PARTICIPATION

TAKEALOADOFFTEXAS.COM

The screenshot shows the ONCOR website homepage. At the top left is the ONCOR logo with the tagline "TAKE A LOAD OFF, TEXAS". To the right is a search bar and a "RESOURCES" button. Below the logo is a navigation menu with links for "GET STARTED", "RESIDENTIAL", "BUSINESS", and "FIND A PROVIDER". The background is a city skyline featuring the Reunion Tower. A large orange banner contains the text "Together, we can do energy better. Let's get started." Below this banner is a section titled "LOOKING TO SAVE ENERGY FOR..." with three circular icons: a house for "YOUR HOME?", a building for "YOUR BUSINESS?", and crossed tools for "OR ARE YOU A CONTRACTOR?". At the bottom, there are social media icons for Facebook, Twitter, LinkedIn, and Instagram, followed by a footer with contact information and a copyright notice: "HOME | CONTACT US | SITE MAP ©2018 Oncor All Rights Reserved. For more information on Oncor visit www.oncor.com".

GLOSSARY OF TERMS

GLOSSARY OF TERMS – CALCULATING SAVINGS

- **Measurement and Verification (M&V):** The process of verifying and measuring the actual energy and demand savings as the result of an energy efficiency project. This can include metering or logging of data and engineering calculations.
- **Deemed Savings:** An estimate of energy or demand savings for a measure that has been developed from actual data and analytical methods to create stipulated values. Deemed savings may be used in specific applications in lieu of measurement and verification activities.
- **E-Files:** A set of Excel-based spreadsheets that incorporate deemed savings information used to calculate energy and demand savings based on specific input criteria.



GLOSSARY OF TERMS – FORMS AND TOOLS

Fixture Codes: A code provided to denote a specific lighting fixture in the E1 Lighting File.

Program Manuals: Document that incorporate all the program rules, processes, incentives, budgets, and program contact information.

Phases of Participation:

- Initial Application (IA): Blocks incentive funds for a project for a specified period of time.
- Final Application (FA): Provides accurate project information used to generate a formal Reservation of Funds Agreement.
- Installation Notice (IN): Period of time for construction and notification to Oncor of completion.
- Savings Report (SR): Generation of the project savings and incentives.



GLOSSARY OF TERMS – PROGRAM EVALUATION



Estimated Useful Life (EUL): The estimated time (typically in years) that a measure continues in operation.

Cost Effectiveness: The value of the savings generated by a program or measure versus the cost.

Evaluation or EM&V: The process of an outside, third party (hired by the PUCT) conducting verification activities on utility administered programs.

Opt Out: A customer or customer class that has elected not to contribute to the Energy Efficiency Cost Recovery Fund. These Customers are NOT eligible for participation.

ENERGY EFFICIENCY PROGRAMS



PROGRAM OFFERINGS

COMMERCIAL PROGRAMS	RESIDENTIAL PROGRAMS
Commercial Standard Offer Program <input type="checkbox"/> Commercial Custom Option	Home Energy Efficiency Program
	Low-Income Weatherization Program
Commercial Solar Program	Residential Solar Program
Commercial Load Management Program	Targeted Low-Income Program
Small Business Program (MainStreet Efficiency)	Residential Load Management
Commercial Retro-Commissioning Market Transformation Program	Retail Products Program

Schools



Homes



Businesses



COMMERCIAL ENERGY EFFICIENCY PROGRAMS

Oncor's Commercial Energy Efficiency Programs provide incentives for upgrading equipment and processes to increase the energy efficiency of a facility. Commercial facilities have the opportunity to select from two participation pathways.

Commercial Standard Offer Program

- Incentives available for new or existing facilities.
- Project savings determined using deemed savings.

Commercial Custom Option

- Projects with measurement and verification requirements.

Types of Projects:



Lighting



Motors



Chillers

RESIDENTIAL ENERGY EFFICIENCY PROGRAMS

The Home Energy Efficiency Program and Low Income Weatherization Program offer incentives to approved participating service providers who install qualifying energy saving products for eligible Oncor residential customers.

To participate

- Homes must have Oncor as their electric delivery provider
- Homeowners and renters (who have permission from the owner) may participate
- Contact an approved service provider



RESIDENTIAL ENERGY EFFICIENCY PROGRAMS

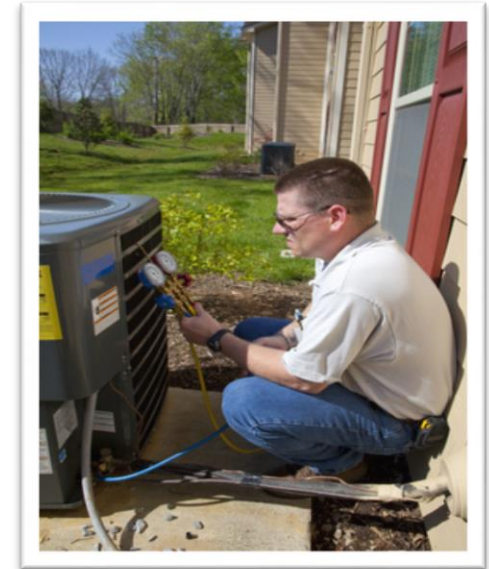
Home Energy Efficiency (HEE)

- HEE Program provides incentives to approved participating service providers who implement energy saving projects, such as insulation, and HVAC upgrades.
- Incentives are designed to help lower the overall cost to the customer for the energy efficiency improvement.

Low-Income Weatherization (LIW)

- The LIW Program offers incentives to approved participating service providers who implement qualifying energy saving projects for residential customers with income levels at or below 200 percent above the federal poverty guidelines.

Types of Projects:



Heating and Cooling



Insulation

SOLAR PROGRAMS

Financial incentives are offered to Service Providers for the installation of eligible distributed solar energy photovoltaic generating equipment

- Available to Oncor's residential and commercial customers (incentives paid to Service Providers)
- Incentive amount is based on each meter location and installed equipment
- Approved Service Providers calculate each projects estimated incentive amount



Project caps

- Commercial – 200 kW and not to exceed 75% of the annual peak demand
- Residential – 10 kW

2020 Average Project Incentives:

- Residential: \$5,677
- Commercial: \$42,784

COMMERCIAL TEAM CONTACT INFORMATION

EE Commercial Programs Specialist

Cary Betts

214-486-3220

Cary.Betts@oncor.com

Commercial Program Manager

Kim Hooper

214-486-3158

Kimberly.Hooper@oncor.com

Commercial and Residential Load
Management Program Manager

Ron Haskovec

214-486-5160

Ron.Haskovec@oncor.com

Commercial Program Manager

Matt Taylor

214-486-5488

Matt.Taylor@oncor.com

Solar Program Manager

Josh Emeter

214-486-4662

Joshua.Emeter@oncor.com

Inspections Manager

Terry Manning

214-486-4624

tmanning@oncor.com

EEPM Help Desk

866-258-1874

eepm-support@oncor.com

Insurance Coordinator

866-258-1874

eepm-insurance@oncor.com



RESIDENTIAL CONTACT INFORMATION

Home Energy Efficiency and
HVAC Program Manager

Jeff Reed

214-486-6966 office

Jeff.Reed@oncor.com

Low-Income Weatherization
Program Manager

Joanna Gomez

214-486-4153

Joanna.Gomez@oncor.com

Inspections Manager

Terry Manning

214-486-4624

tmanning@oncor.com

Solar Program Manager

Josh Emeter

214-486-4662

Joshua.Emeter@oncor.com

EETM Help Desk

(866) 258-1874

eepmsupport@oncor.com

Insurance

eepminsurance@oncor.com



thank you